

1. Note
2. The installation surface of this product must be solid wood wall, concrete wall, brick wall, etc. Please do not install it on the surface of plaster wall or hollow wall.
3. When cutting and installing the steel strip, please wear goggles and protective gloves. The steel strip is elastic, disassemble the steel strip when it is safe.

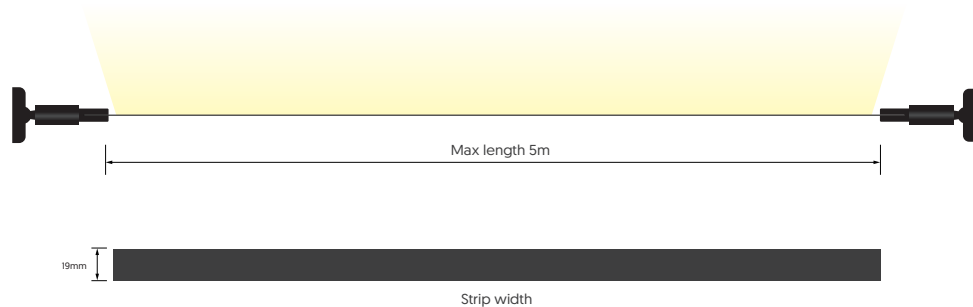
# LUXELINE



Please read this manual carefully before installation and use, and use in the correct way.

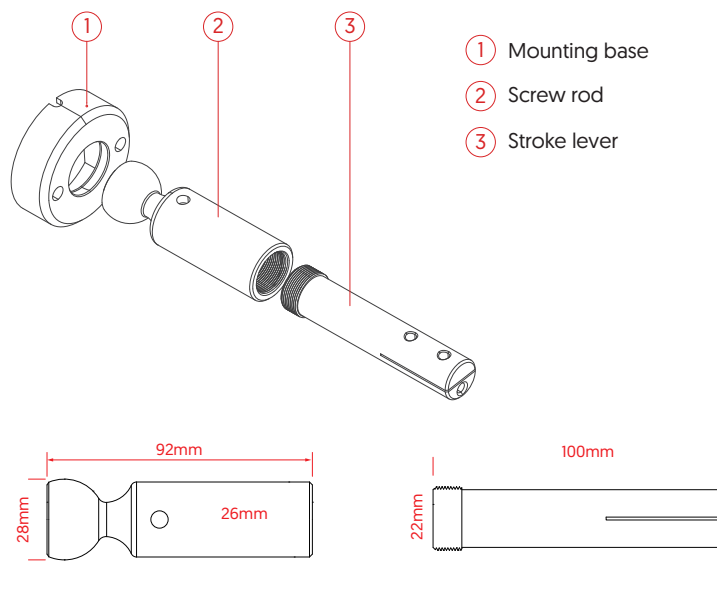
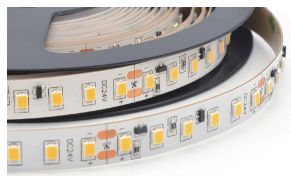
Please keep this manual after reading and understanding, so that all users of this product can consult it at any time

## Dimension drawing



Note:

Max length 5 meters, can be arbitrarily cut, recommended light source



## Bill of material

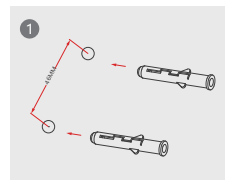


### Plastic Steel Strip LXLSXXXXXXXBS

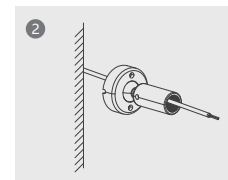


- ① Bottom-Box Size
- ② Revolving bar
- ③ Threadedrod
- ④ Hexkey
- ⑤ Rubberplug
- ⑥ Screw

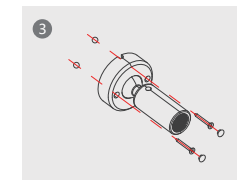
## Installation procedure



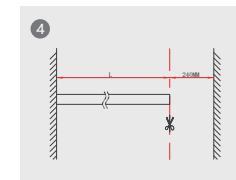
Drill two holes with a diameter of 6mm into the installation wall.  
The distance between the holes is 42mm.  
Install plastic expansion pipes.



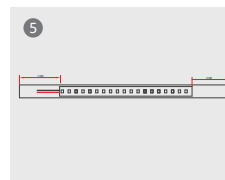
The wire connecting the DC24V passes through the bottom box and the rotating rod.



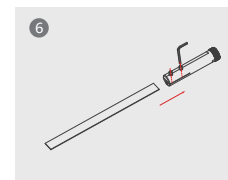
Pass the screw rod through the base box to the wall, and secure the rotating rod with wire to the terminal of the bottom box.



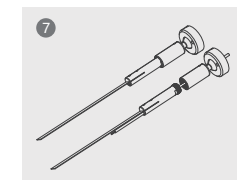
To measure the distance of the installation wall, the shear length of the plastic steel strip should be 240mm shorter than the measurement length L.



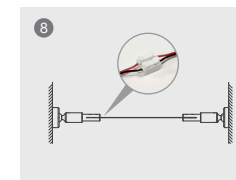
Paste LED lights onto the plastic steel belt, reserve 70mm at the beginning end and 50mm at the end.



Secure the plastic steel belt to the screw rod.



First fix the screw rod with the LED light outlet end, and then fix the other end of the screw rod.



Press the fast terminal to connect the two outgoing cables.