

MADE IN SPAIN

SURFACE & PENDANTS



LED



T5-C



GU10



E27



PUSH



PLANE

PUSH pendant



CUBE STRAIGHT

TUBULAR DEC 1/2



TUBULAR DEC 3/4

TUBULAR DEC 5/6



TUBULAR DEC 7/8

FLAT



SQUARE FLAT pendant

SQUARE FLAT



FLAT pendant

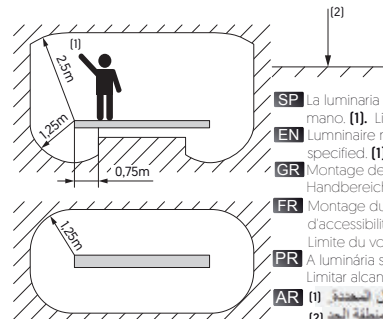
LED



DRONE



DRONE pendant



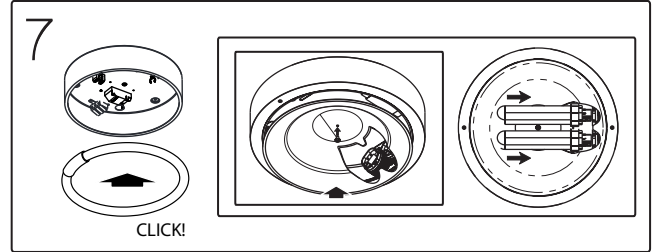
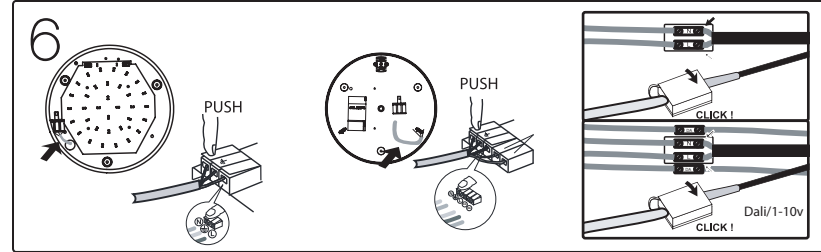
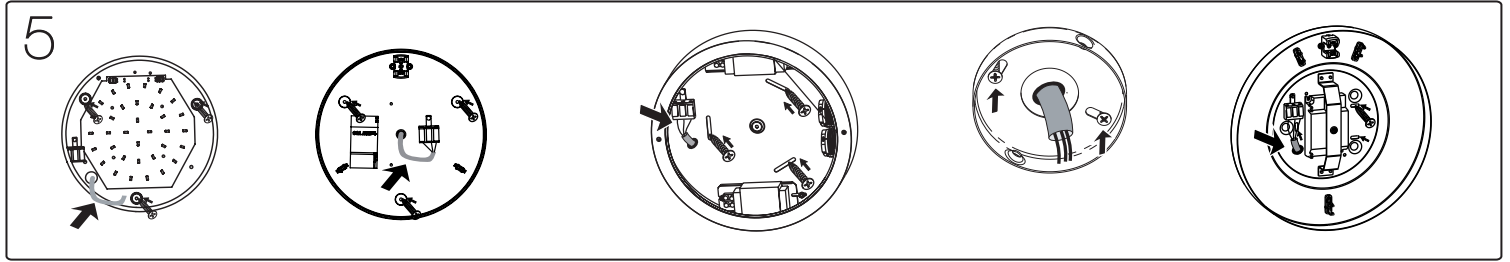
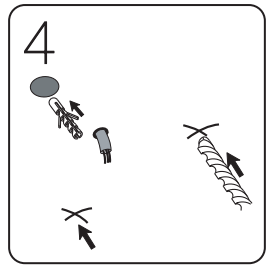
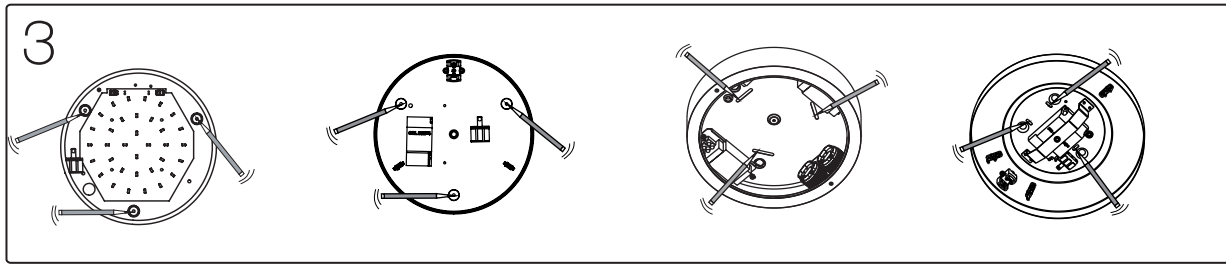
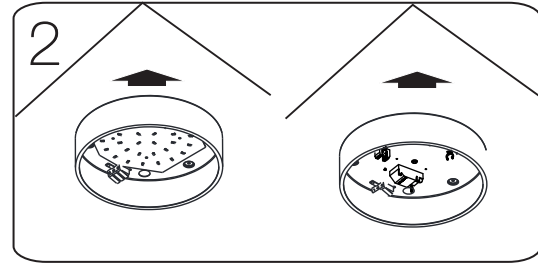
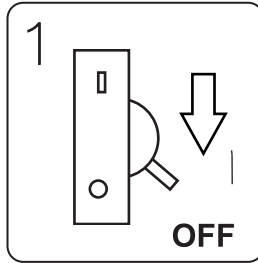
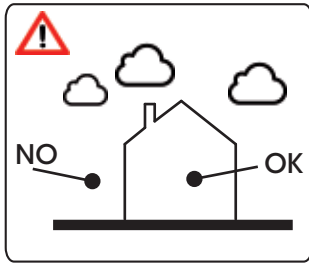
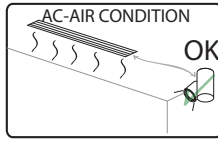
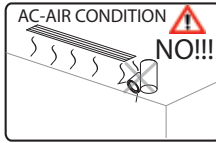
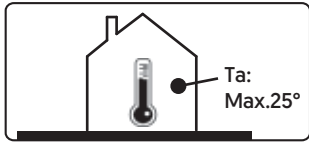
- SP** La luminaria debe montarse solo fuera del alcance de la mano. (1). Limite de la zona del alcance de la mano. (2)
- EN** Luminaire may only be installed outside the reach area specified. (1). Limit of arm's reach. (2)
- GR** Montage der Leuchte nur außerhalb desangegeben Handbereichs(1), zulässig. Grenze des Handbereichs. (2)
- FR** Montage du luminaire uniquement en dehors du volume d'accessibilité au toucher. (1) Limite du volume d'accessibilité au toucher. (2)
- PR** A luminária só deve ser instalado fora do alcance. (1) Limitar alcance da área. (2)
- AR** (1) لا يمكن تثبيت الإنارة (لا خارج منطقة الوصول المحددة) (2) الأصابع منطقة الحد

- SP** La fuente de luz de esta luminaria debe reemplazarse únicamente por la empresa Onok.
- EN** The light source of this luminaire should be replaced only by the company Onok.
- GR** Die Lichtquelle dieser Leuchte sollte nur ersetzt werden von der Firma Onok.
- FR** La source lumineuse de ce luminaire doit être remplacée uniquement par la société Onok.
- PR** A fonte de luz desta luminária só deve ser substituída pela Onok.
- AR** لتعويض، بأكمله الإضاءة جهاز تغير يجب. حياته نهاية إلى LED بشركة الاتصال المرجو ONOK

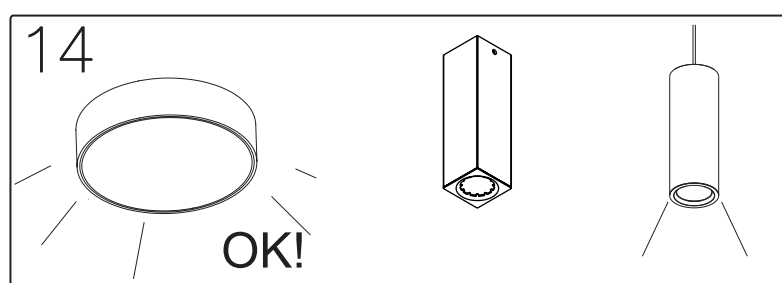
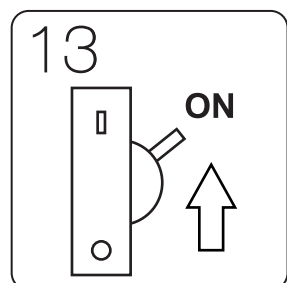
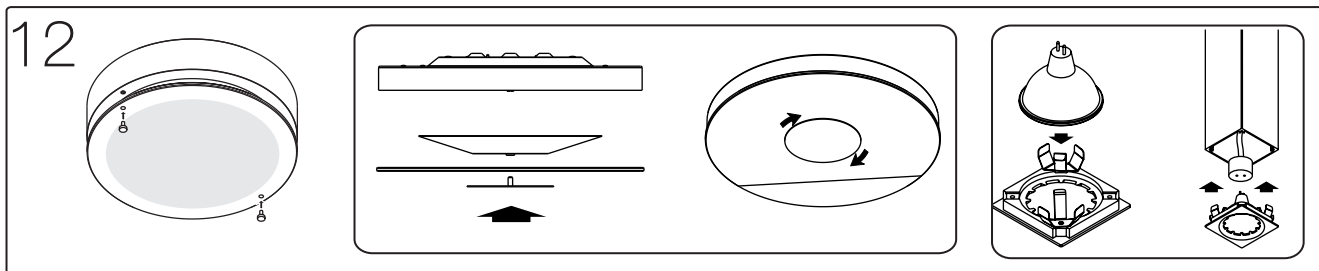
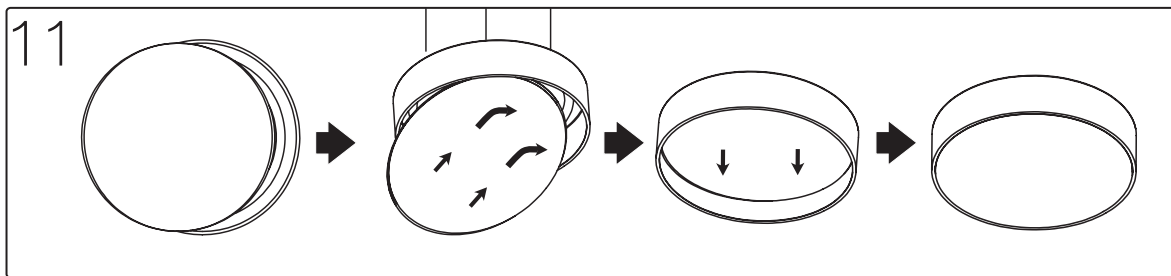
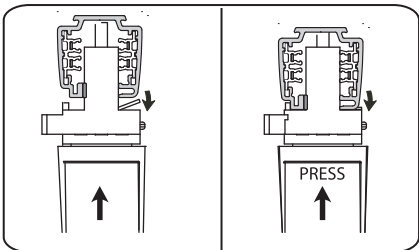
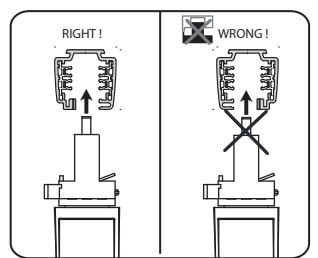
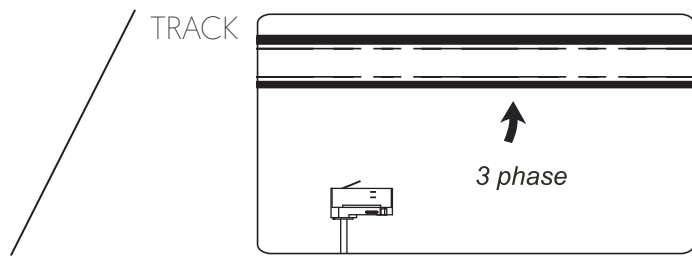
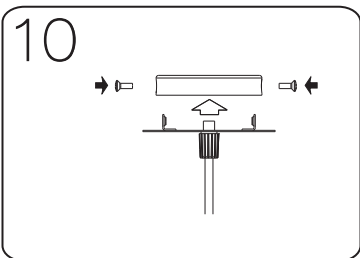
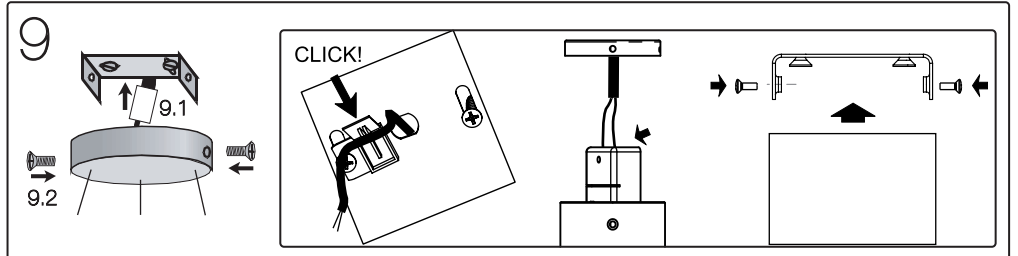
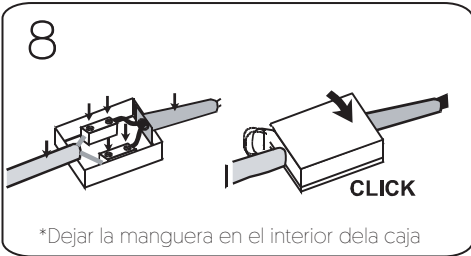
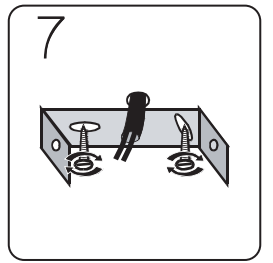
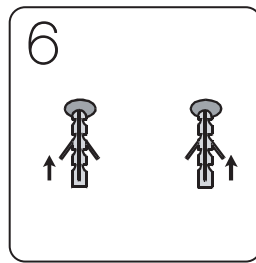
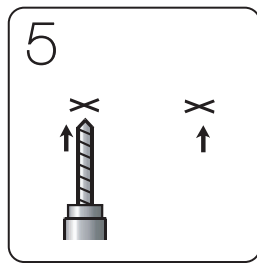
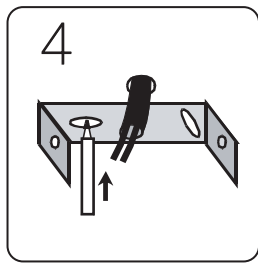
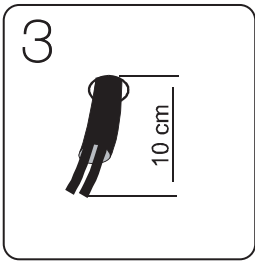
DALI/PUSH/I-10V

- SP** Mantener el aislamiento reforzado entre la alimentación en baja tensión (BT) y los conductores de control.
- EN** Maintain the insulation reinforced between the low voltage supply (LV) and the control conductors.
- GR** Pflegen verstärkte Isolierung zwischen der Niederspannungsversorgung (BT) und dem Steuerleiter.
- FR** Maintenir une isolation renforcée entre l'alimentation basse tension (BT) et les conducteurs de commande.
- PR** Manter isolamento reforçado entre a alimentação de baixa tensão (BT) e os condutores de control.
- AR** الحفاظ على العزل المستحقة بين التغذية الموصلات إمدادات التيار الكهربائي والتحكم.

Surface



Pendants



SURFACE & PENDANTS

Drone Surface

