

Neon COBPlus 1406 16W/m

Neon COBPlus 1406 16W/m is a COB neon LED strip that delivers continuous and uniform lighting with no visible dots. Its flexible design allows easy installation in straight lines or curves, making it ideal for decorative, architectural, and signage applications, with an excellent balance between performance and energy efficiency.

Qualities

LED

24V
IP67
55.000h
McAdam C2

Led Colour



Regulation



Beam Angle



REF. CODE

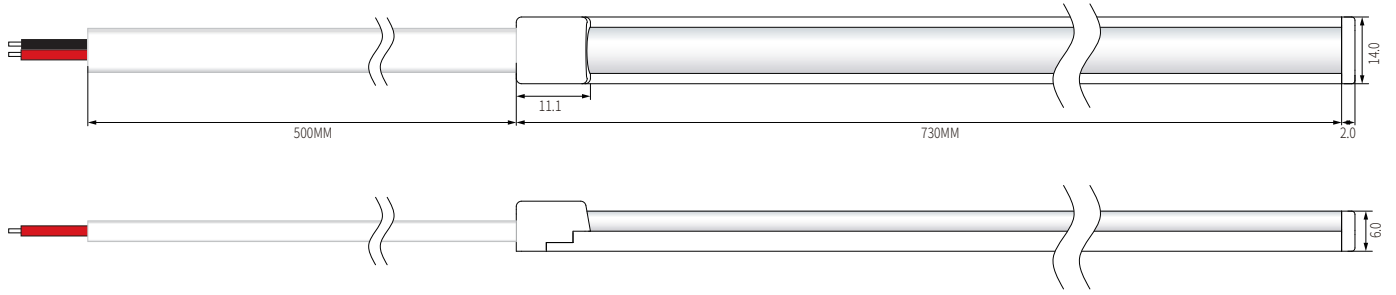
CODE BASE | Technology | Power | LED Control | LED Colour | Beam angle | Difusser | IP

TLC2 + A Led + 16 16W + N NoAplica + 9 RGBW + 9 >90° + X NoDiffuser + 67 IP

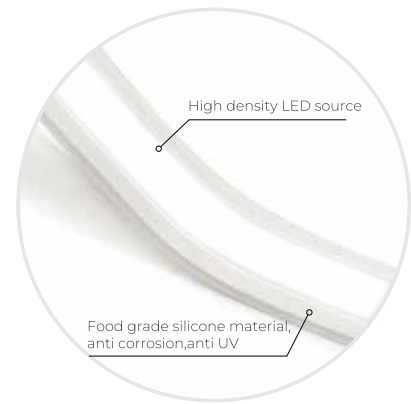
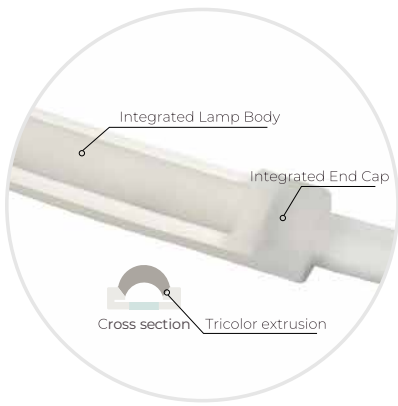
PARAMETER

	W	V	TEMP	LUM/m	CRI
Neón COBPlus					
1406 16W/m	16W	24V	RGB	304	>90

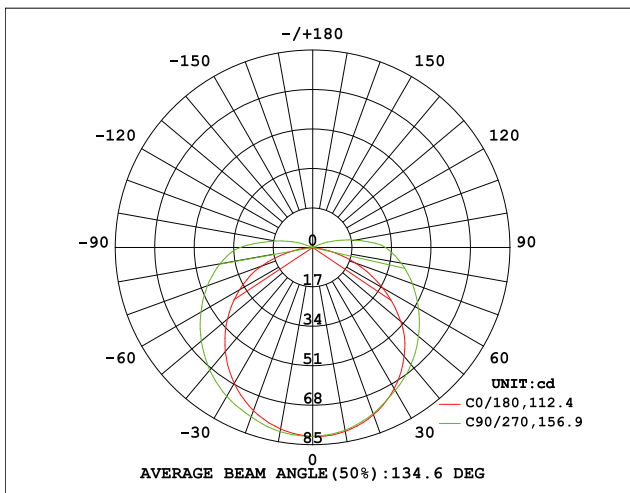
TEC. DRAWINGS



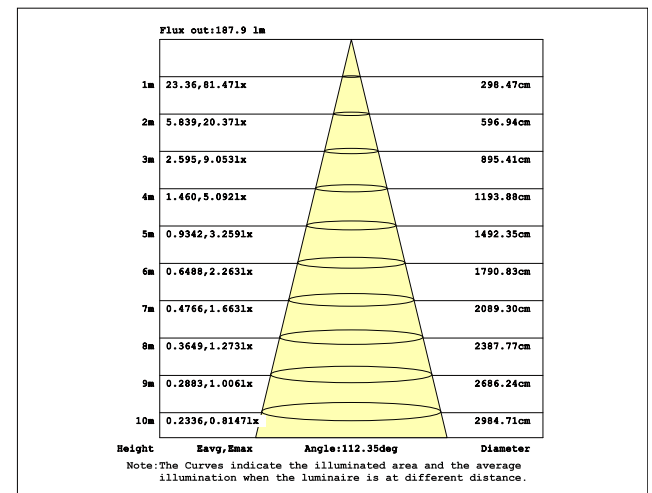
Cutting interval:33.3mm



Light Distribution Curve

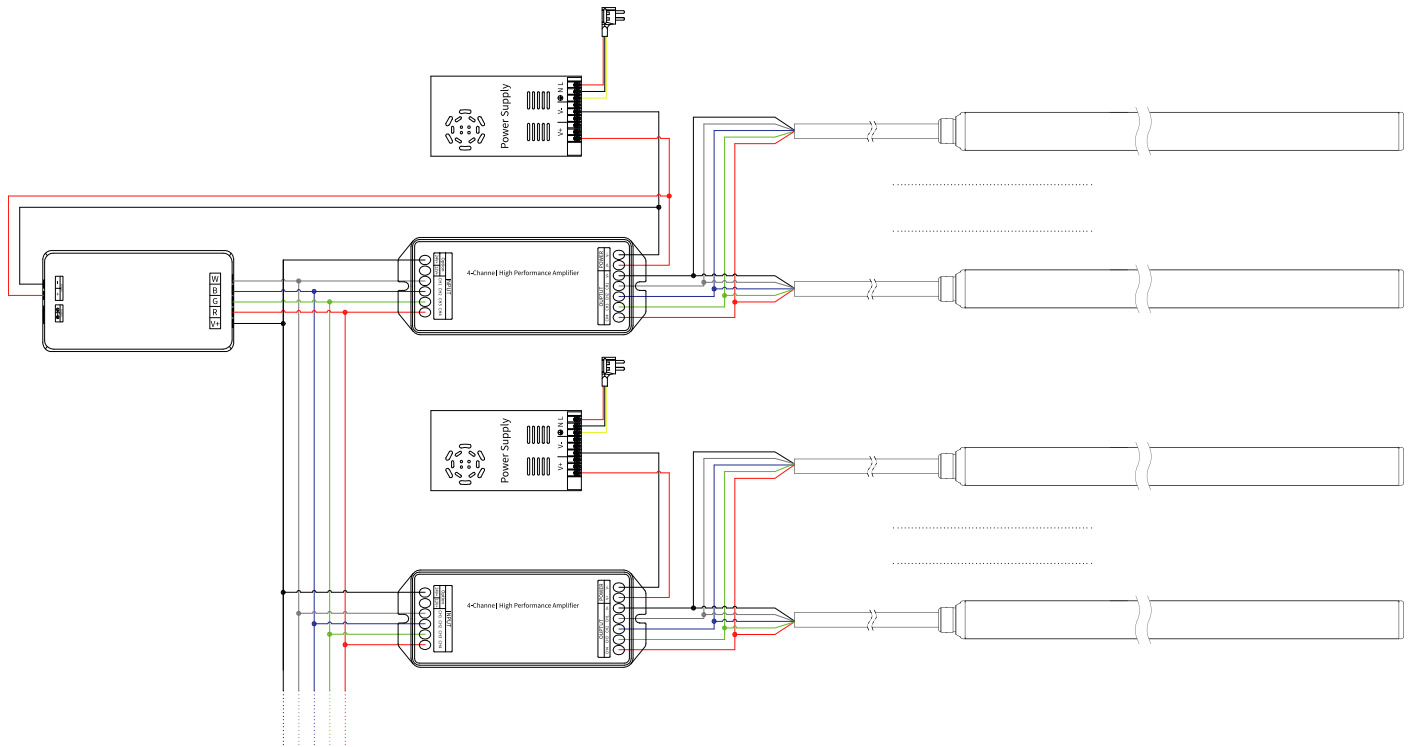


Illuminance Curve

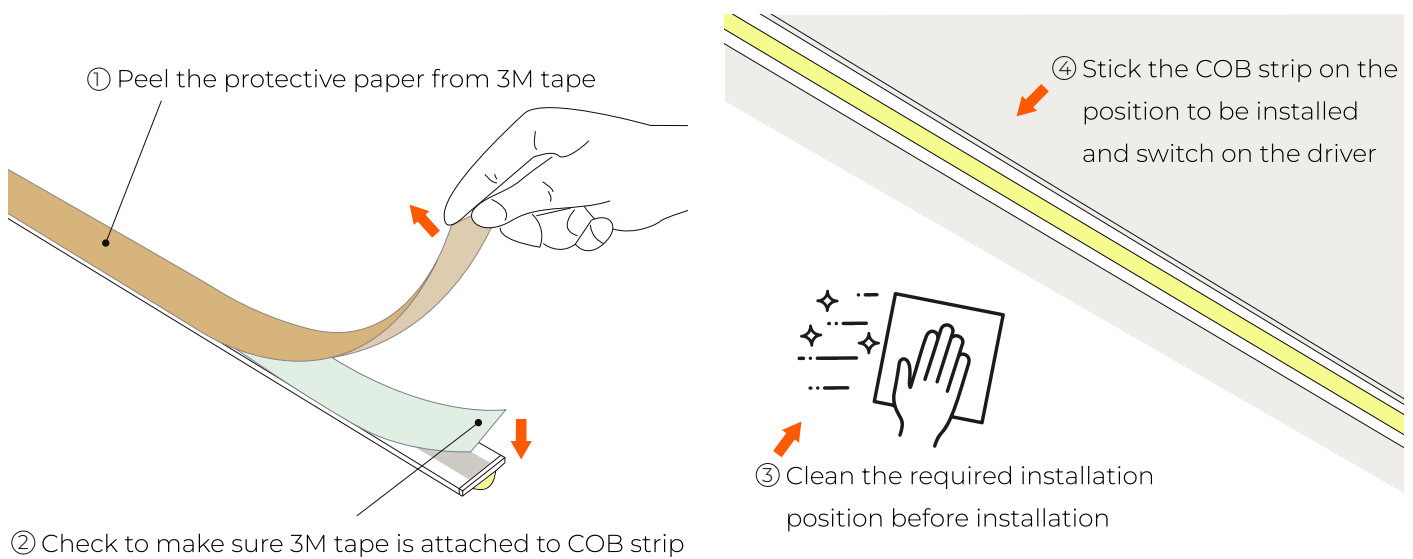


Connection diagram

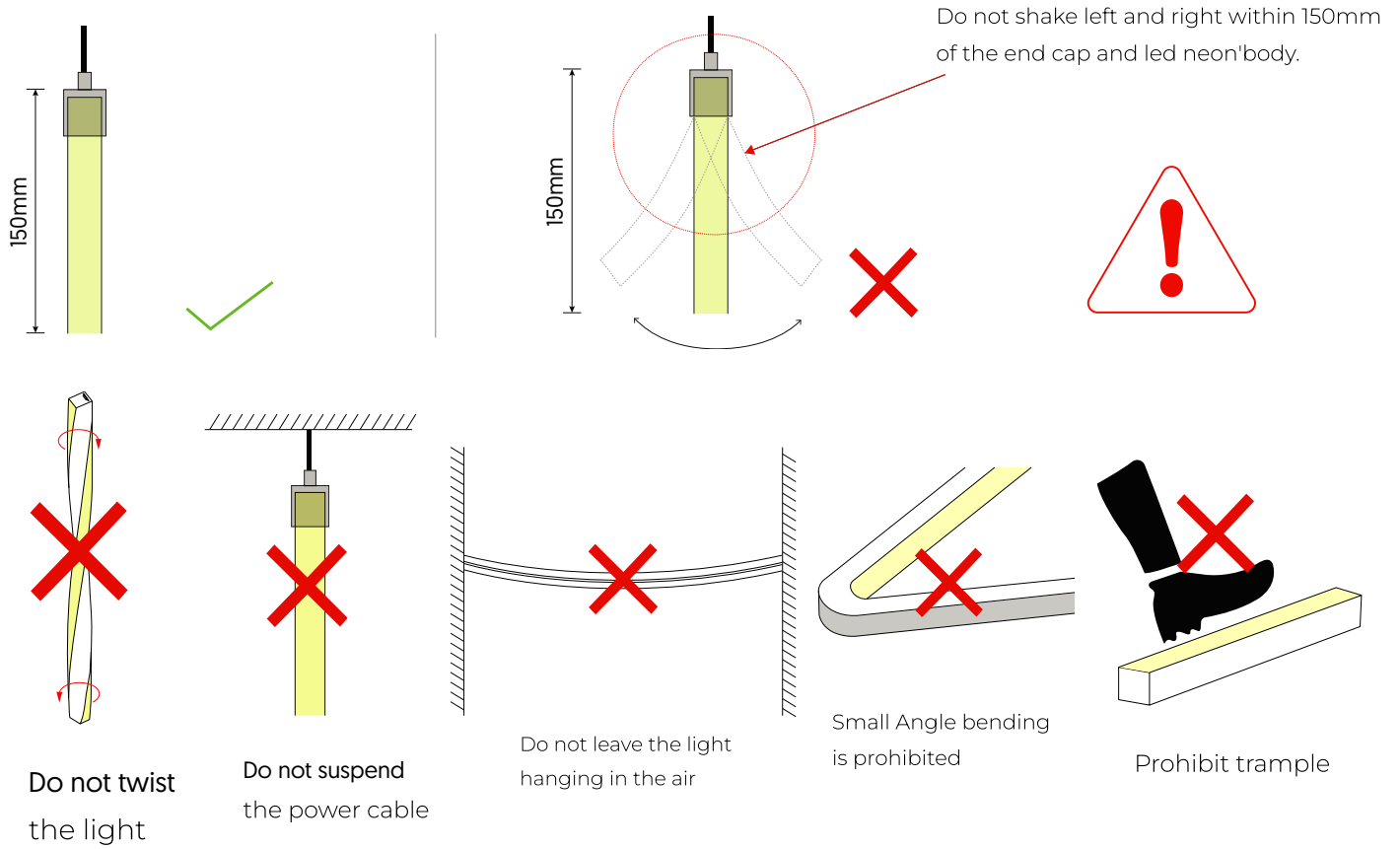
Single Color Connection Diagram



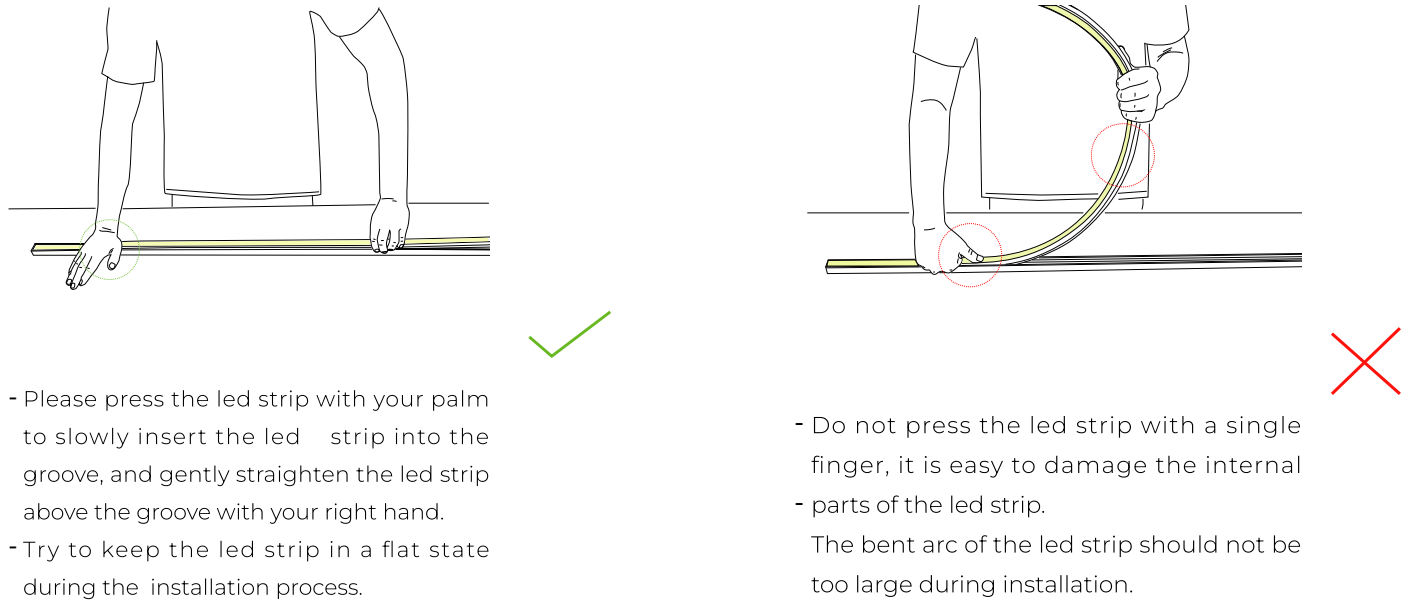
Installation Diagram

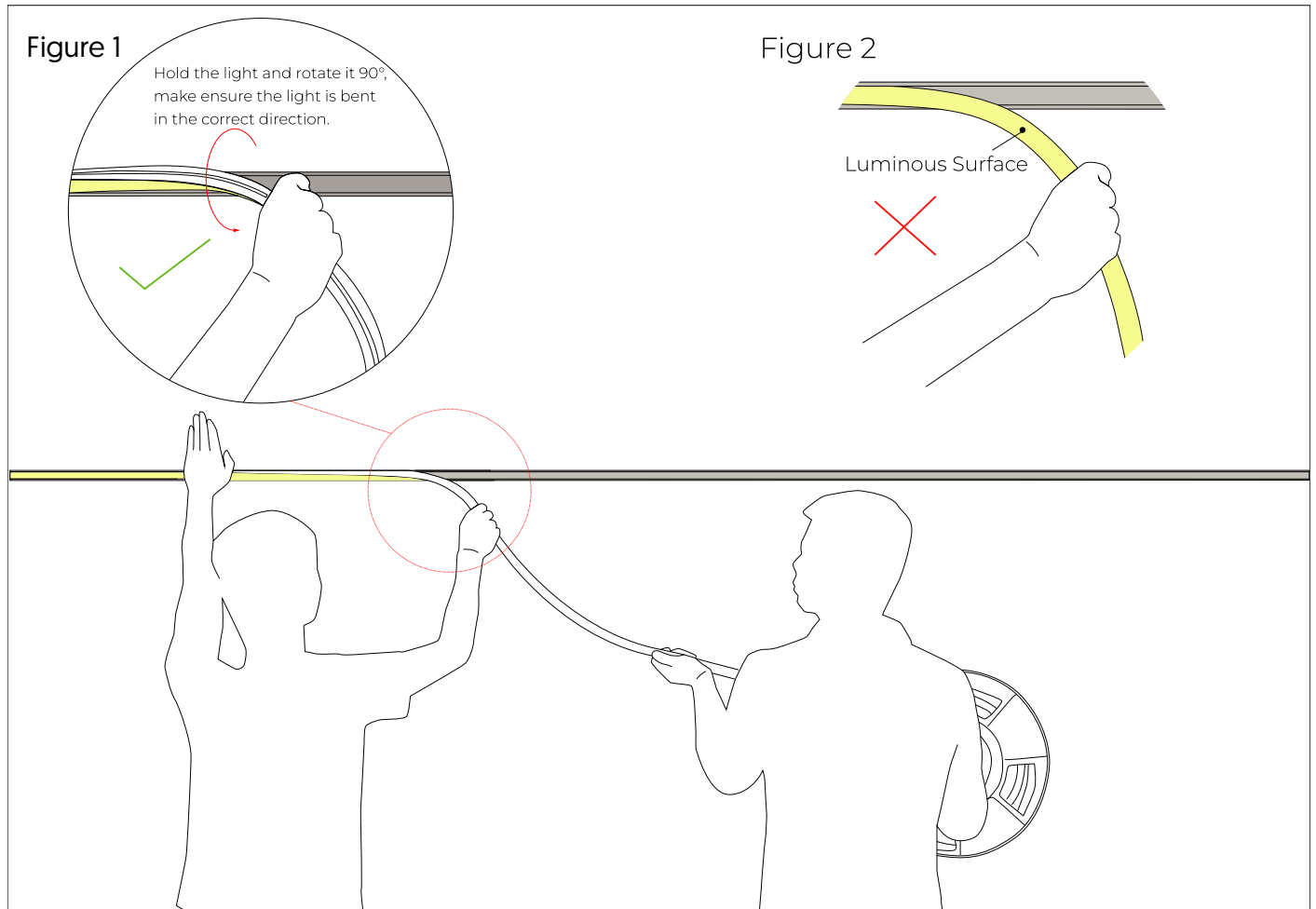


Installation Precautions



Put in the profile





1.Installer:

- Press the light with the palm of the left hand to slowly load it into the slot. Straighten the light with right hand, hold it and rotate it 90° to droop it in the direction of your hand. See Figure 1.
- Do not bend the luminous surface to the side. See Figure 2.

2.Assistant:

- Cooperate with the installer to lift the reel of the light, and then slowly deliver the light to installer. Do not pull or twist the light during the installation.